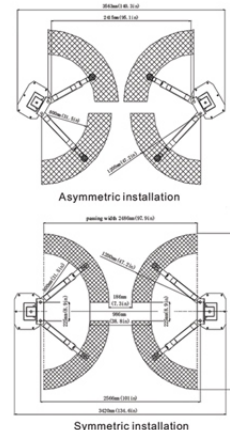
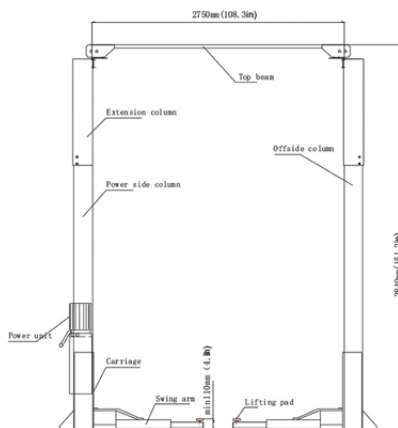


LAUNCH TECHNOLOGIES SA PTY LTD

#1 SELLER OF WORKSHOP EQUIPMENT IN SOUTH AFRICA

SAL240SC CLEAR BASE TWO POST LIFT



ADDITIONAL PARTS



SQUARE LOW LIFTING TRAY
Adjustment range - 25 - 90mm



EXTENSION SLEEVE
90/125/140mm

With Dual hydraulic cylinders drive, stable lifting and lowering. And it adopts two steel cables for equalization, force two carriages to move synchronously.



CONFIGURATION INSTRUCTIONS

| | | Basic | CE Standard |
|------------------|---|-------|-------------|
| Swing Arm | 2 Stage (800 ~ 1200) x4 | ✓ | ✓ |
| Unlocking System | Bilateral Manual Pull | ✓ | ✓ |
| Power Unit | Domestic Underneath - 2.2kw 10L | ✓ | ✓ |
| Control Box | Electric Control Box | | ✓ |
| Lifting Pad | Double Screws Lifting Pad | ✓ | ✓ |
| Safety Device | Cylinder travel limit module, button box, anti-explosion valve, guardrail | | ✓ |
| Colour | Launch Red, Launch Grey, Launch Blue | ✓ | ✓ |
| Warranty | 1Year | ✓ | ✓ |

PRODUCT PARAMETERS

| | |
|----------------------|-------------------|
| Rated Load | 4500kg |
| Lifting Height | 1850mm |
| Initial Height | 110mm |
| Lifting Time | ≤50s |
| Lowering Time | ≥20s ≤40s |
| Passing Width | 2486mm |
| Overall Width | 3370mm |
| Overall Height | 2860mm |
| Motor Power | 2.2kW |
| Motor Voltage | Single phase/220V |
| Working Noise | ≤75dB |
| Working Oil Pressure | 16MPa |
| Bottom Clearance | 1.1M |
| Package | 2900*550*740mm |
| Weight | 7600KG |

PRODUCT FEATURES

- ▶ Fully automatic unlocking safety device is adopted for operating only with UP/DOWN button.
- ▶ The cable and oil pipe are fully concealed; with decent and elegant appearance.
- ▶ Double hydraulic cylinder and high strength chain drive makes stable and smooth lifting and lowering.
- ▶ Wire rope equalization system forces synchronous movement of two carriages and effectively prevents vehicle from tilting.
- ▶ 24V low voltage control box IP54 level ensures operator's safety.
- ▶ Cylinder travel limit switch effectively protects cylinder and extends its lifespan.
- ▶ Emergency lowering valve can be manually operated to make lift lower safely in case power is off.
- ▶ Flow-control valve is deployed to make lift slower or stop lowering for the case of oil pipe explosion, thus protects operator's safety and vehicle not being damaged.
- ▶ CE-STOP function with safety alarm beep would automatically warn operators to keep safe distance from lift when it lowers to about 250mm high from ground.
- ▶ Door rubber pad protects car door from being damaged in collision.
- ▶ More lifting pads with different height meets the requirements for light lorries and SUVs.
- ▶ Asymmetric arms are optional.
- ▶ Passed 115% dynamic loading test and 150% static loading test.
- ▶ CE certificated.

☎ (+27)11 397 3073

🌐 www.launchsa.co.za

☎ (+27)74 855 5555

✉ sales@launchsa.co.za

📍 23 Boeing W Road, Bedfordview, Germiston, Johannesburg, 2007