

LAUNCH TECHNOLOGIES SA PTY LTD

#1 SELLER OF WORKSHOP EQUIPMENT IN SOUTH AFRICA

M204

CAR WHEEL ALIGNER



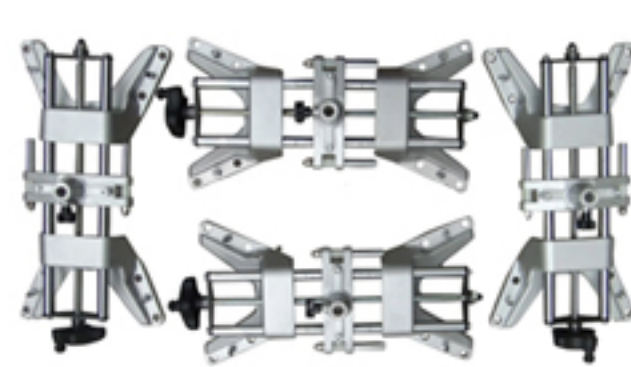
HARDWARE CONFIGURATION



5 million high definition industrial camera, which can capture 24 frames of images per second and ensure the measurement data is dynamically in real time.



High Strength, small plastic target disc, which is lighter, thinner and stronger.



Wheel calmp: Quick installation, suitable for all models of 12" - 23", Double calmp head corresponding to different iron and aluminium wheels

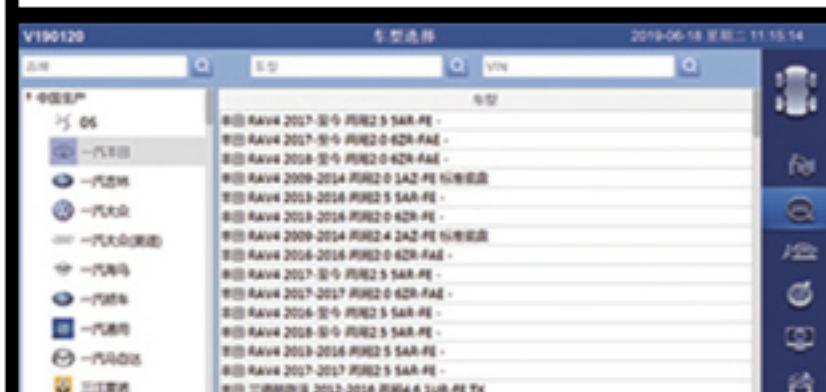
SOFTWARE FEATURES



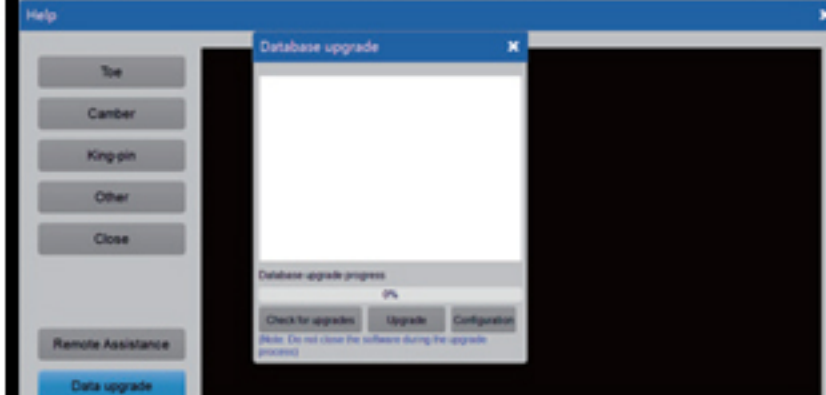
Car pushing measurement function: use the backward car pushing measurement mode to measure most required data at a time.



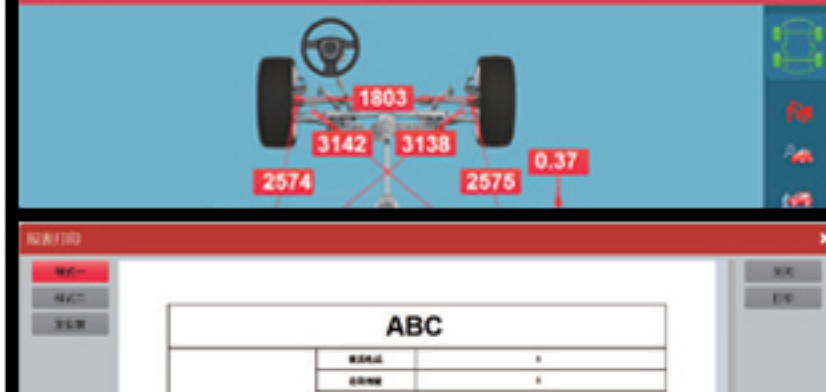
The measurement result display: available for different interface switching according to user needs.



Contains more than 60 000 original databases in domestic and overseas.



One-click database upgrade in the cloud.



Toe out on turns measurement.



Report printing function.

ADDITIONAL PARTS



Camera Beam



Cabinet



Wedge-Shape Pad



Mouse & Keyboard



Fixed Aluminum Pillar



Industrial Computer



Turntable



21.5" Display Screen

TECHNICAL PARAMETERS

Items	Front Axle		Back Axle	
	Precision	Measurement Range	Precision	Measurement Range
Toe	±0.02	±20°	±0.02	±20°
Camber	±0.02	±15°	±0.02	±15°
SAI	±0.02	±26°	Null	Null
Caster	±0.02	±26°	Null	Null
Thrust Angle	Null	Null	±0.02	±5°

(+27)11 397 3073

www.launchsa.co.za

(+27)74 855 5555

sales@launchsa.co.za

23 Boeing W Road, Bedfordview, Germiston, Johannesburg, 2007